

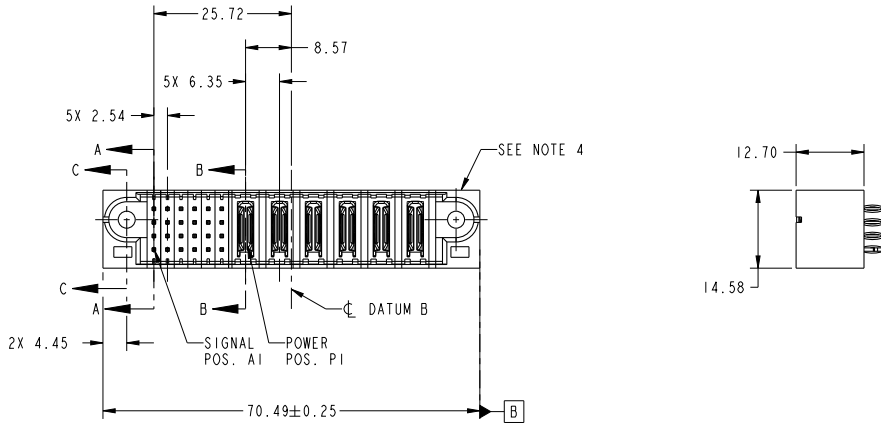
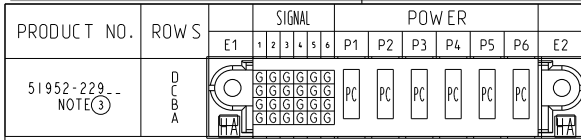
Excellent Integrated System Limited

Stocking Distributor

Click to view price, real time Inventory, Delivery & Lifecycle Information:

[FCI](#)
[51952-229LF](#)

For any questions, you can email us directly:
sales@integrated-circuit.com



CODE	DIM "M" MATING LENGTH	CONTACT TYPE
PC	[N/A]	POWER
G	[6.86]	SIGNAL
HA	[N/A]	HOLD-DOWN

spec ref	See Notes		dr	Ruan MT	2012/10/10	projection	MM	size	A4	scale	1:1	
tolerance std	TOLERANCES UNLESS OTHERWISE SPECIFIED		eng	Ruan MT	2013/10/15			ecn no	-	rel level	Released	
See Notes			chr	-	-		product family	PwrBlade		rev	A	
surface	linear	0.X ±0.50				part no	24S + 6P		dwg no	51952-229		
		0.XX ±0.25				VERTICAL PRESS-FIT HEADER		cat. no.	Product - Customer Drw		sheet	1 of 4
	angular	0° ±2°				www.fci.com						

Print File - REV C - 2009-08-09

1

2

3

PDS: Rev :A

STATUS:Released

Printed: Oct 16, 2013



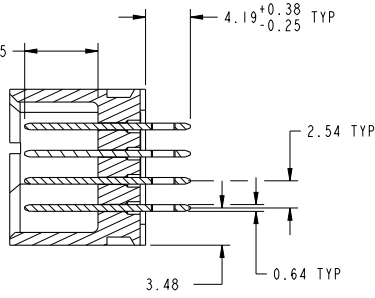
Copyright FCI.

D

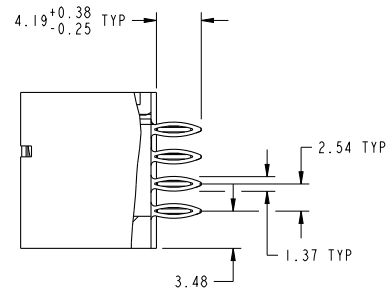
PRODUCT NUMBER

51952-229--
NOTE 3

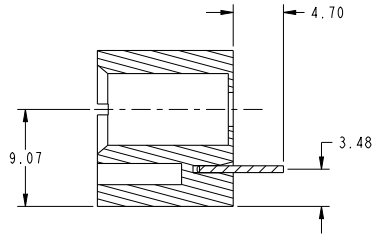
DIM "M" ±0.25



SECTION A-A
SCALE 2:1



SECTION B-B
SCALE 2:1



SECTION C-C
SCALE 2:1

dr	Ruan MT	2012/10/10	projection	MM	size	A4	scale	1:1	
eng	Ruan MT	2013/10/15			ecn no	-	rel level		Released
chr	-	-	product family	PwrBlade					
appr	Pei-Ming Zheng	2013/10/15	www.fci.com		part no	24S + 6P		rev	A
			VERTICAL PRESS-FIT HEADER		dwg no	51952-229			
cat. no.			Product - Customer Drw			sheet 2 of 4			

Print File - REV C - 2009-06-09

PDS: Rev :A

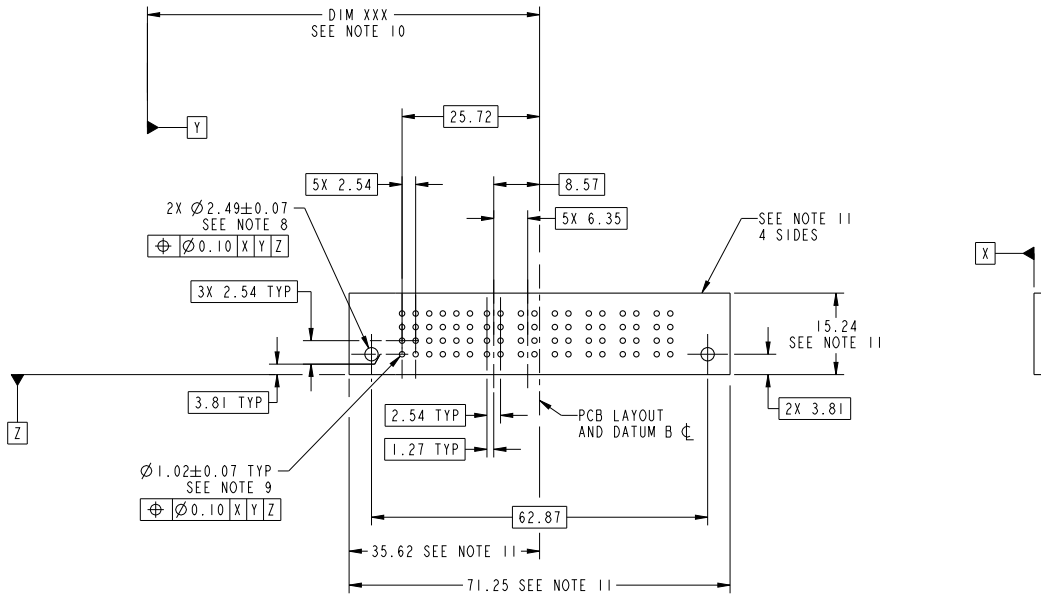
STATUS:Released

Printed: Oct 16, 2013



Copyright FCI.

PRODUCT NUMBER
51952-229--
NOTE 3



RECOMMENDED PCB LAYOUT

dr	Ruan MT	2012/10/10	projection	MM	size	A4	scale	1:1
eng	Ruan MT	2013/10/15			ecn no	-	rel level	Released
chr	-	-			product family	PwrBlade		
appr	Pei-Ming Zheng	2013/10/15				24S + 6P VERTICAL PRESS-FIT HEADER	dwg no 51952-229	rev A
www.fci.com			cat. no.	Product - Customer Drw			sheet 3 of 4	

Print File - REV C - 2009-08-09

PRODUCT NUMBER
51952-229...
NOTE 3

- NOTES:
- DIMENSIONS AND TOLERANCES ARE IN ACCORDANCE WITH ASME Y14.5M, 1994 UNLESS OTHERWISE SPECIFIED.
- CONNECTOR NOTES:
- HOUSING MATERIAL: UL 94 V-0 GLASS FILLED HIGH-TEMP THERMOPLASTIC
POWER CONTACT MATERIAL: COPPER ALLOY
SIGNAL PIN MATERIAL: COPPER ALLOY
 - SEE ITEM 3 & 4 IN PRINT 10064183 FOR PLATING SPEC OF 51952-229 AND 51952-229LF RESPECTIVELY.
 - MANUFACTURER'S NAME, DATE CODE AND OPTIONAL P/N TO APPEAR ON THIS SURFACE. THE MARK CAN BE OMITTED IF THERE IS NOT ENOUGH SPACE ON THIS SURFACE.
 - PRODUCT SPECIFICATION GS-12-149.
APPLICATION SPECIFICATION BUS-20-067.
 - PACKAGED IN TRAYS.
- PCB NOTES:
- ALL HOLE DIAMETERS ARE FINISHED HOLE SIZE.
 - MOUNTING HOLES, WHERE APPLICABLE, ARE UNPLATED.
 - $\varnothing 1.151 \pm 0.025$ DRILLED HOLES PLATED WITH 0.008 MIN SnPb OR Sn OVER .001 [0.03] TO 0.08 Cu PLATING TO ACHIEVE $\varnothing 1.02 \pm 0.07$ HOLE.
 - "DIM XXX" TO BE DETERMINED BY THE CUSTOMER.
 - CONNECTOR KEEP-OUT ZONE.
 - FOR PRESS FIT APPLICATION USE FCI CAM TOOL 430169-XXX.



dr	Ruan MT	2012/10/10	projection		MM	size	A4	scale	1:1	
eng	Ruan MT	2013/10/15				ecn no	-			
chr	-	-	product family	PwrBlade		rel level	Released			
appr	Pei-Ming Zheng	2013/10/15	title		24S + 6P	dwg no	51952-229		rev	A
www.fci.com			cat. no.		Product - Customer Drw			sheet 4 of 4		

Print File - REV C - 2009-06-09

Copyright FCI.