

## Excellent Integrated System Limited

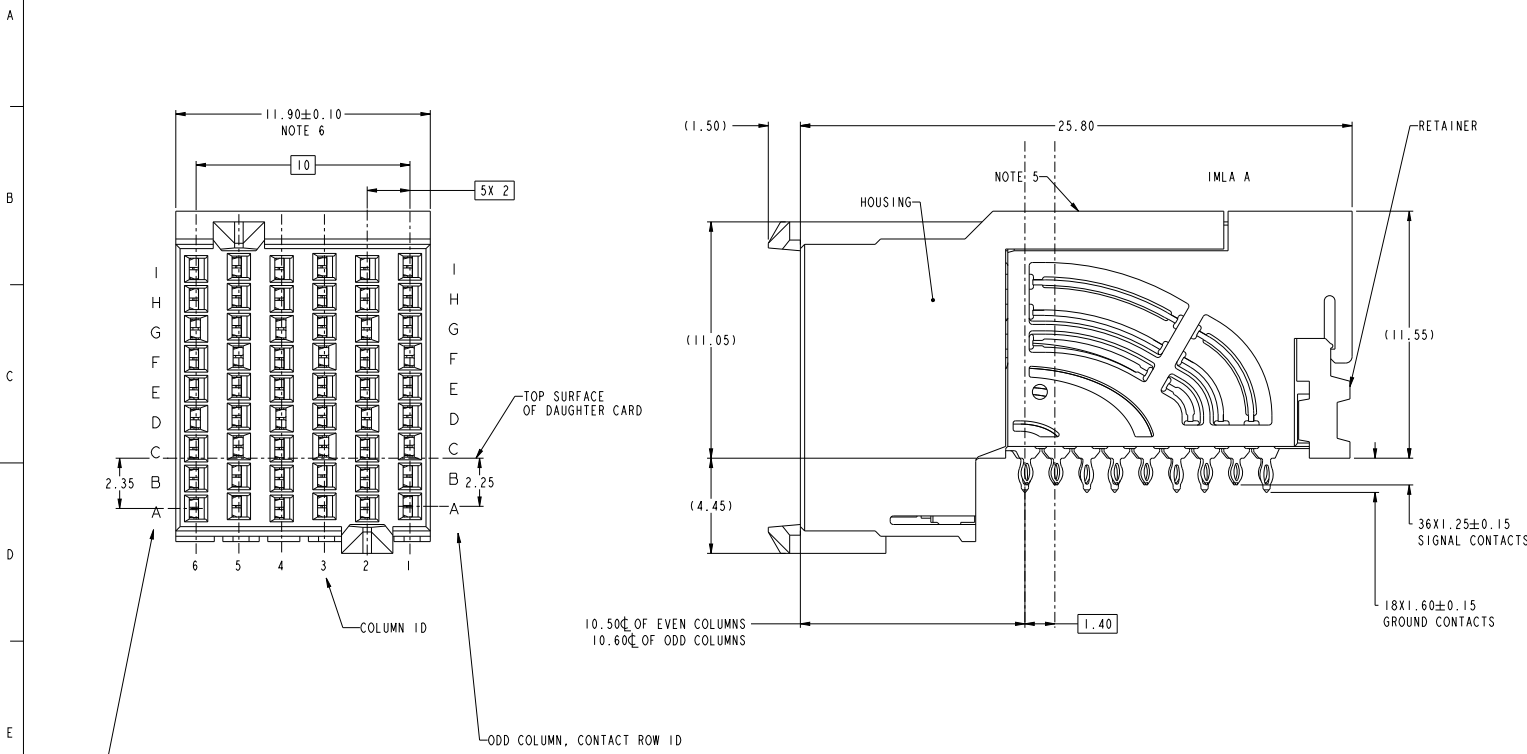
Stocking Distributor

Click to view price, real time Inventory, Delivery & Lifecycle Information:

[FCI](#)  
[10123420-101LF](#)

For any questions, you can email us directly:  
[sales@integrated-circuit.com](mailto:sales@integrated-circuit.com)

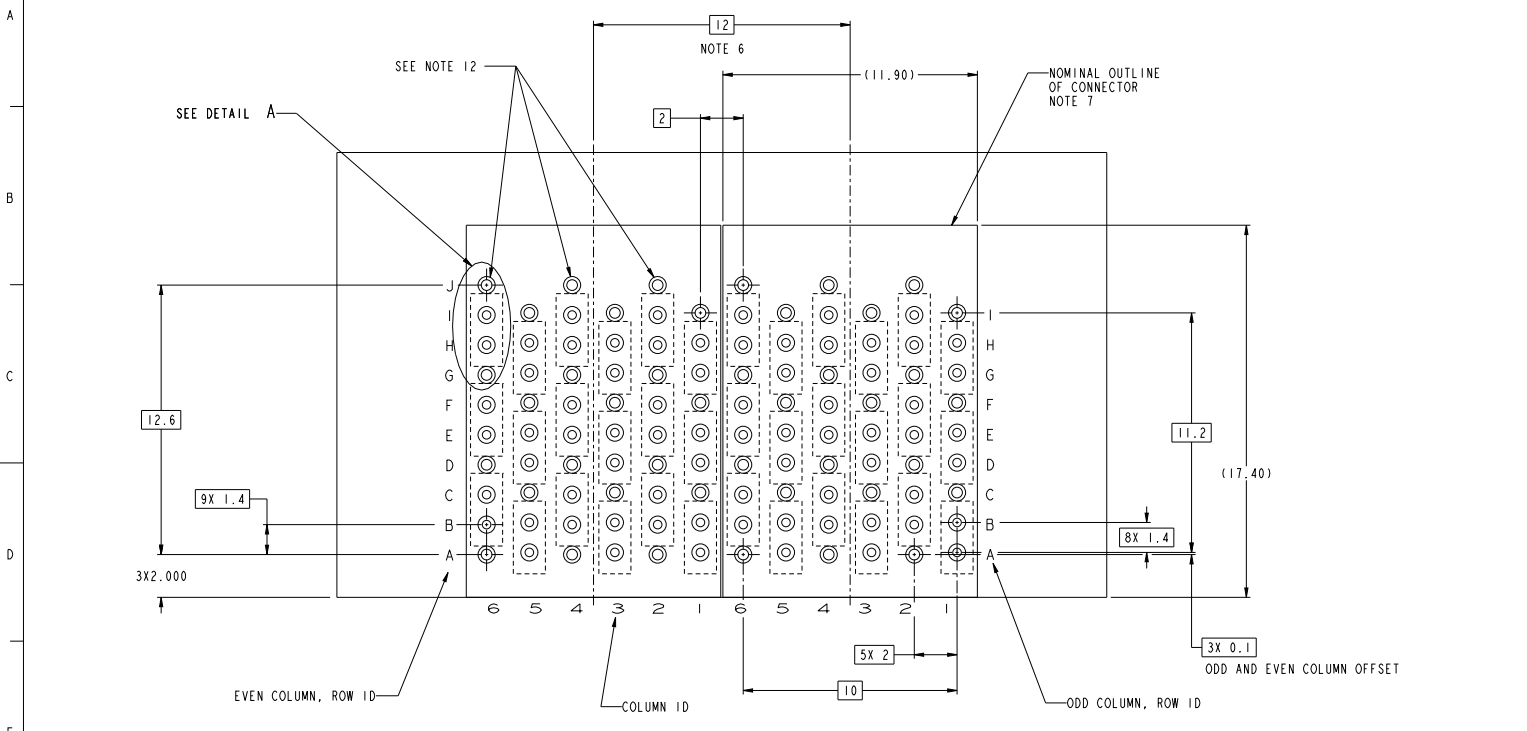
PRODUCT NUMBER  
SEE SHEET 3



Copyright FCI

spec ref	---	dr	LinShan Ngiam	date	20150105	projection	MM	size	A2	scale	1:1
tolerance std	ASME Y14.5M	eng	LinShan Ngiam	checked		product family	AirMax VSE	acc no		rel level	Released
surface	linear	0.1	±.3	0.2X	±.10	FCI	AIRMAX VS2 R.A. RECEPTACLE	10123420		rev	C
	angular	0.2X	±.050			www.fci.com	ASS'Y, 3 PAIR, 54 POS, 6 IMLA, 12MM, Small Pk			Product - Customer Draw	sheet 1 of 3

PDS: Rev :C STATUS: Released Printed: Feb 09, 2015

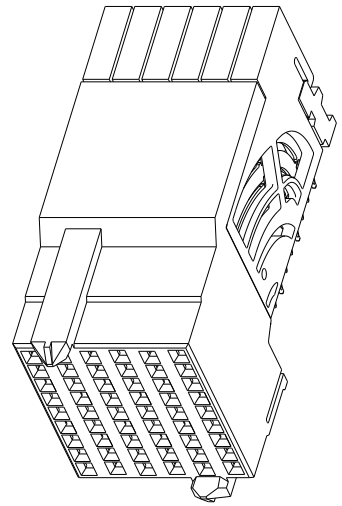


RECOMMENDED PCB LAYOUT  
FOR DIFFERENTIAL APPLICATIONS  
COMPONENT SIDE  
(TWO ADJACENT FOOTPRINTS SHOWN)  
NOTES 6, 8, & 11

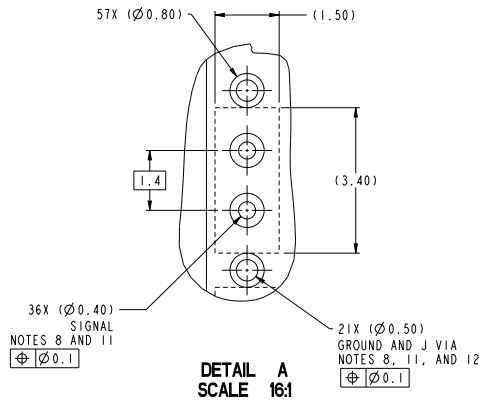
spec ref	---	dr	Lin/Alan Ngien	date	08/01/15	projection	MM	size	A2	scale	1:1
tolerance std	ASME Y14.5M	eng	Lin/Alan Ngien	chkd	Lin/Alan Ngien	product family	AirMax VSE	acc no	10123420	rel level	Released
TOLERANCES UNLESS OTHERWISE SPECIFIED		appr	Lin/Alan Ngien	www.fcil.com	FCI		AIRMAX VS2 R.A. RECEPTACLE		10123420		
surface	linear	0.1	±.3	0.2X	±.10	ASS'Y, 3 PAIR, 6 IMLA, 12MM, Small Pk		rev		C	
	angular	0°	±°	0.2X	±.050	Product - Customer Draw		sheet 2 of 3			

PRODUCT NUMBER	PRESS-FIT TAIL PLATING TYPE
10123420-101	TIN/LEAD ALLOY OVER NICKEL
10123420-101LF	TIN OVER NICKEL (LEAD FREE)

- 1 - CONNECTOR MATERIALS:  
HOUSING: HIGH TEMP THERMOPLASTIC, NATURAL, UL94-V0  
IMLA PLASTIC: HIGH TEMP THERMOPLASTIC, BLACK, UL94-V0  
CONTACT: COPPER ALLOY  
ORGANIZER: HIGH TEMP THERMOPLASTIC, WHITE, UL94-V0
- 2 - CONTACT PLATING:  
SEPARABLE INTERFACE:  
GXT PLUS PLATING, QUALIFIED TO MEET THE REQUIREMENTS OF FCI PRODUCT SPECIFICATION GS-12-0956 INCLUDING TELCORDIA GR-1217-CORE (NOVEMBER 1995) CENTRAL OFFICE TEST SEQUENCE  
PRESS-FIT TAILS: SEE TABLE
- 3 - PRODUCT SPECIFICATION: GS-12-0956
- 4 - APPLICATION SPECIFICATION: GS-20-0305.
- 5 - PRODUCT MARKING, (PART NUMBER & LOT CODE), ON THIS SURFACE.
- 6 - THE MINIMUM CENTERLINE SPACING BETWEEN ADJACENT MODULES IS 12.0 MM.
- 7 - CONNECTOR OUTLINE MAY BE SCREEN PRINTED ONTO CUSTOMER PCB TO BE USED AS A GUIDE FOR MANUAL CONNECTOR PLACEMENT.
- 8 - REFER TO CUSTOMER DRAWING 10104444 FOR INFORMATION ON PCB HOLE DIAMETERS AND PLATING OPTIONS
- 9 - LEAD FREE PRODUCT MEETS THE EUROPEAN UNION DIRECTIVES & OTHER COUNTRY REGULATIONS AS DESCRIBED IN GS-22-008
- 10 - PACKAGING MEETS GS-14-920 LEAD FREE LABELING SPECIFICATION.
- 11 - GROUND CONTACTS (C, F, AND I IN ODD COLUMNS AND A, D, AND G, EVEN COLUMNS) REQUIRE (Ø0.500) FINISHED HOLES. SIGNAL LOCATIONS REQUIRE (Ø0.400) FINISHED HOLES.
- 12 - THESE OUTER VIAS (J) ARE OPTIONAL. WHILE NO CONNECTOR EONS ARE PRESSED INTO THESE HOLES WE RECOMMEND (Ø0.500) FINISHED HOLES AT THESE LOCATIONS TO PROVIDE GROUND SYMMETRY THROUGH THE PCB.
13. A  $\Delta$  SYMBOL WILL BE NEXT TO ANY DIMENSION, VIEW, OR NOTE, WHICH HAS BEEN MODIFIED WITH THE CURRENT DRAWING REVISION.



10123420-101 OR -101LF



spec ref	---	dr	LuChen Ngan	desig	0801110	projection	MM	size	A2	scale	4:1	
tolerance std	ASME Y14.5M	eng	LuChen Ngan	chk	LuChen Ngan	product family		acc no		rel level	Released	
surface	linear	0.X	±.3	0.XX	±.10	0.XXX	±.050	FCI	AIRMAX VS2 R.A. RECEPTACLE	10123420	rev	C
angular	0°	±						www.fci.com	ASS'Y, 3 PAIR, 54 POS, 6 IMLA, 12MM, Small Pk	Product - Customer Draw	sheet 3 of 3	

PDS: Rev :C

STATUS: Released

Printed: Feb 09, 2015

Copyright FCI