

Excellent Integrated System Limited

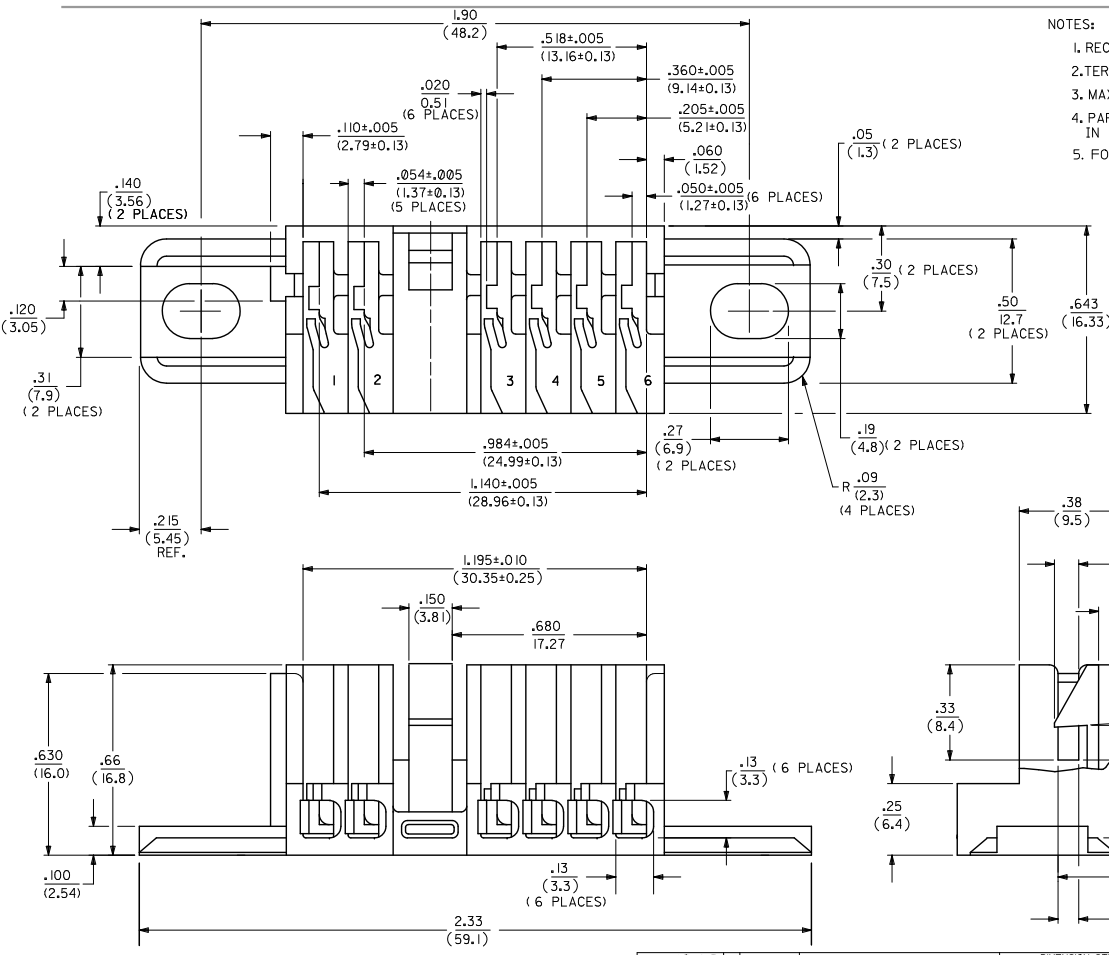
Stocking Distributor

Click to view price, real time Inventory, Delivery & Lifecycle Information:

[Molex Connector Corporation](#)
[0009027061](#)

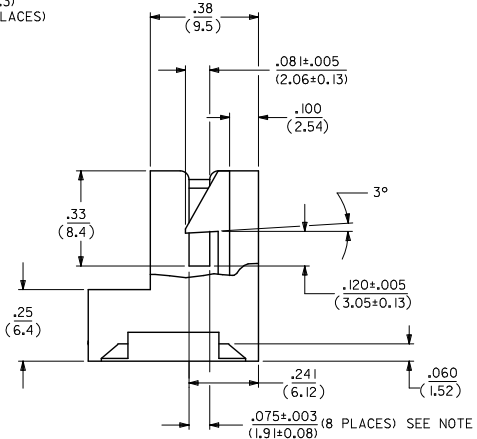
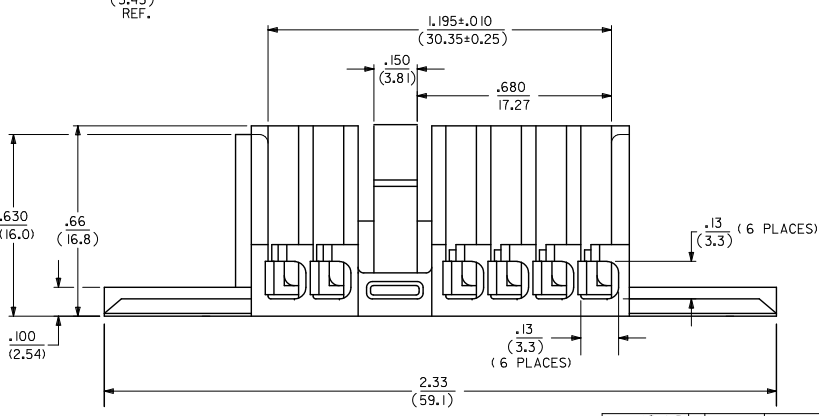
For any questions, you can email us directly:

sales@integrated-circuit.com



- NOTES:
1. RECOMMENDED BOARD THICKNESS (1.60±0.13)/.063±.005.
 2. TERMINAL USED, MOLEX 08-(30 THRU 35)-**.
 3. MAXIMUM WIRE SIZE-18 AWG WITH (0.8)/.03 INSULATION.
 4. PARTS TO BE MOISTURIZED AND SEALED IN A PLASTIC BAG.
 5. FOR PACKAGING INFORMATION: SEE PK-42242-001.

MATERIAL: NYLON, TYPE 6/6, 94V-2



ADD PKG SPECS EC NO: UCP-2012-3608 DRAWN BY: 2012/05/04 CHKD: BELL APPROV: SMITH J3	QUALITY SYMBOLS ∇=0 ∇=0 ∇=0	GENERAL TOLERANCES (UNLESS SPECIFIED)		DIMENSION STYLE IN/MM		SCALE 4:1	DESIGN UNITS INCH	THIRD ANGLE PROJECTION
		4 PLACES ± --- ± ---		DRAWN BY: ES DATE: 1989/02/07		TITLE HOUSING (RIGHT ANGLE P.C. BOARD)		
		3 PLACES ± --- ± .010		CHECKED BY: GF DATE: 1989/02/07		molex		
		2 PLACES ± 0.25 ± .014		APPROVED BY: DATE:		MATERIAL NO. 009-02-7061 DOCUMENT NO. SD-42242-1000 SHEET NO. 1 OF 1		
1 PLACE ± 0.36 ± ---		ANGULAR ± 1/2°		DRAFT WHERE APPLICABLE MUST REMAIN WITHIN DIMENSIONS				
0 PLACE ± ±		SIZE C		THIS DRAWING CONTAINS INFORMATION THAT IS PROPRIETARY TO MOLEX INCORPORATED AND SHOULD NOT BE USED WITHOUT WRITTEN PERMISSION				