



Excellent Integrated System Limited

Stocking Distributor

Click to view price, real time Inventory, Delivery & Lifecycle Information:

[Visual Communications Company, LLC](#)

[LPC_020_CTP](#)

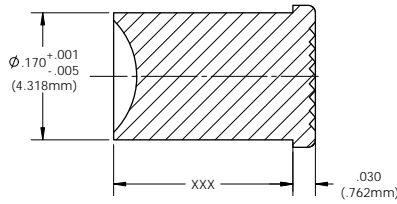
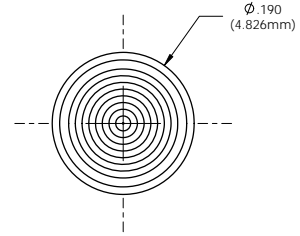
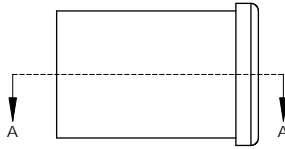
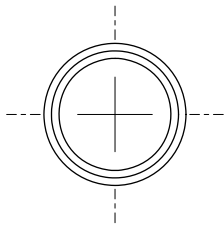
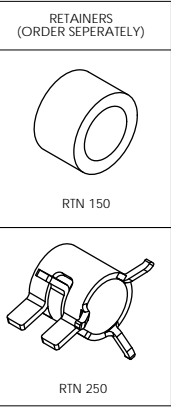
For any questions, you can email us directly:

sales@integrated-circuit.com



- NOTES:**
1. MOUNTING: Panel mounting hole .171" (4.34mm) Diameter
 Litepipe from .200" to .500" use grommet retainer RTN 150
 Litepipe from .500" to 2.00" the spring retainer RTN 250 is recommended for rigidity
 2. Standoff used to adjust the height of a standard LED above the PCB to maintain a maximum .050" clearance between Litepipe and LED.
 3. U.S. & Foreign Pat Issued & Pend.

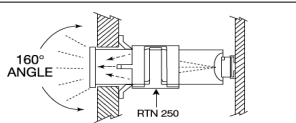
REVISIONS				
ECN #	REV	DESCRIPTION	DATE	INITIALS
	N/A	INITIAL RELEASE	8/25/98	JS
	1	UPDATE DWG FORMAT	12/15/08	JG
	2	REVISE .170" DIMENSION TOLERANCES	3/11/09	AZ
	001	REVISED PER ECR111009AZ01	4/23/10	KH



ORDERING CODE: LPC XXX CTP

LENGTH CODE (Min 020=.200" / Max 200=2.000")	
020	038
040	056
058	074
092	112
135	157
180	
022	040
058	076
094	115
137	160
182	
024	042
060	078
096	117
140	162
185	
026	044
062	080
098	120
142	165
187	
028	046
064	082
100	122
145	167
190	
030	048
066	084
102	125
147	170
192	
032	050
068	086
105	127
150	172
195	
034	052
070	088
107	130
152	175
197	
036	054
072	090
110	132
155	177
200	

COLOR	
CTP	CLEAR



<small>UNLESS OTHERWISE SPECIFIED DIMENSIONS ARE IN INCHES</small> ANGLES DECIMALS 1" 1/16" 1/32" FINISH XXX .005	MATERIAL ACRYLIC (OPTICAL GRADE) UL-94HB	VISUAL COMMUNICATIONS COMPANY, INC. 190 Bostwick Boulevard, Suite101 San Marcos, CA 92069 USA Phone (760) 950-1300 Fax (760) 950-1301 email vccsales@vcc.com
	FINISH SEE NOTES	TITLE: CLIPLITE 4MM LITEPIPE VERTICAL
THIRD ANGLE PROJECTION	APPROVAL DATE DRAWN K.Howard 4/23/10 CHECKED DPZ 5/4/10	SIZE DWG. NO. B LPC XXX CTP SCALE: 8:1 SHEET 1 OF 1
DO NOT SCALE DRAWING		

SPECIAL LENGTHS UPON REQUESTS