



Distributor of Harting: Excellent Integrated System Limited

Datasheet of 09682535611 - D-Sub Connector Receptacle, Female Sockets 15 Position
Through Hole, Right Angle Solder

Contact us: sales@integrated-circuit.com Website: www.integrated-circuit.com

Excellent Integrated System Limited

Stocking Distributor

Click to view price, real time Inventory, Delivery & Lifecycle Information:

[Harting](#)

[09682535611](#)

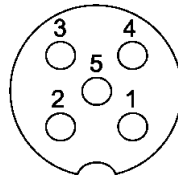
For any questions, you can email us directly:

sales@integrated-circuit.com

M12 PushPull PCB connector



Mating face



A-coding
Mating face
acc. to IEC 61076-2-101



Circular Connectors

Identification	Part number	Drawing	Dimensions in mm
----------------	-------------	---------	------------------

M12 PCB adapter, shielded



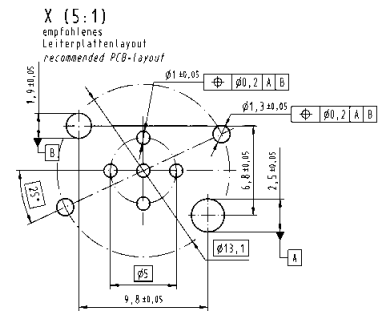
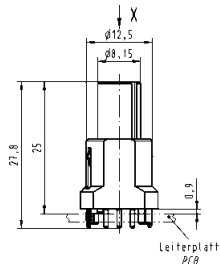
Packaging: 60 pieces in a tray
Order housing separately

Female
5 poles, A-coding

8 poles, A-coding

21 03 321 2518*

21 03 321 2818*



Housing for PushPull locking



for front mounting

21 03 301 2003

