

## Excellent Integrated System Limited

Stocking Distributor

Click to view price, real time Inventory, Delivery & Lifecycle Information:

[E-Switch](#)

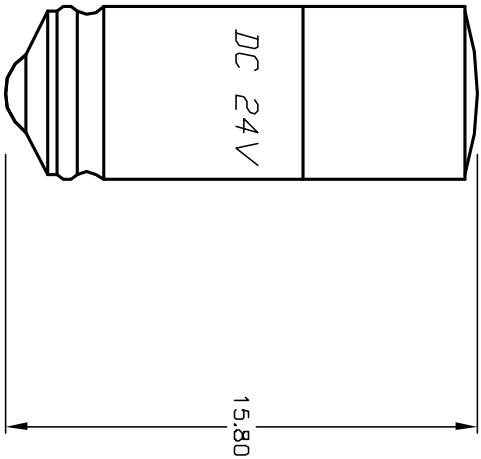
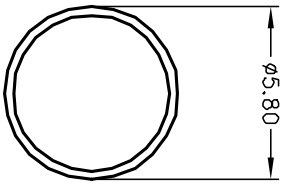
[5000423LAMP](#)

For any questions, you can email us directly:

[sales@integrated-circuit.com](mailto:sales@integrated-circuit.com)

RED L.E.D

PARAMETERS	SYMBOL	TYP.	UNITS
AVERAGE CURRENT	$I_A$	12	mA
EMISSION WAVELENGTH	$\lambda_p$	632	nm
LUMINOUS INTENSITY	$I_f$	350	mcd



NOTES:

1. ALL DIMENSIONS IN MM
2. GENERAL TOLERANCE: X.X=±0.4  
X.XX=±0.25
3. VOLTAGE: 24V DC SEE ABOVE
4. OPERATING TEMP. -20°C to 60°C

REV.	ECN No.	DESCRIPTION	DATE	CHKD
A	11896	RELEASED FOR PRODUCTION	3/15/02	CJB
		DESCRIPTION		CHKD

THE INFORMATION CONTAINED IN THIS DOCUMENT IS PROPRIETARY TO E-SWITCH AND IS NOT TO BE COPIED OR TRANSMITTED

**E-SWITCH®**

TITLE	SCALE	DATE	DR	DWG	REV
50-004-23 (RED LED)	4:1	2/01/02	CJB	F050423	A