

Excellent Integrated System Limited

Stocking Distributor

Click to view price, real time Inventory, Delivery & Lifecycle Information:

For any questions, you can email us directly:

sales@integrated-circuit.com



CLEAR HOLE MOUNTING BRACKETS

Designers' Choice

BOARD BRACKETS

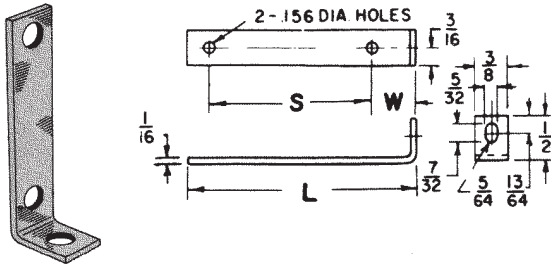
Originally designed for our line of standardized terminal boards; these brackets can also be used in other applications.

Choice of Steel or Aluminum

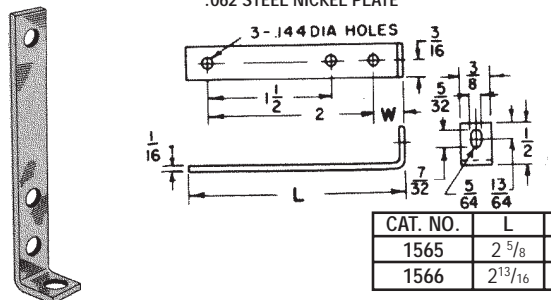
MATERIAL:

.062 Steel, Nickel Plate

.062 Aluminum



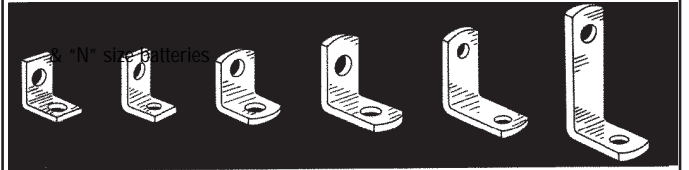
| CAT. NO. | | W | L | S | For Use With Board No's (see page 98) | | |
|----------|-------|------|--------|--------|---------------------------------------|-------|-------|
| Steel | Alum. | | | | 15032 | 15072 | 15092 |
| 1556 | 622 | 3/8 | 1 5/8 | 1 | 15032 | 15072 | 15092 |
| 1567 | 623 | 3/8 | 2 1/8 | 1 1/2 | 15033 | 15073 | 15093 |
| 1568 | 624 | 3/8 | 2 5/8 | 2 | 15034 | 15074 | 15094 |
| 1569 | 625 | 3/8 | 3 1/8 | 2 1/2 | 15035 | 15075 | 15095 |
| 1570 | 626 | 9/32 | 1 3/16 | 3/4 | 15022 | 15024 | 15030 |
| 1571 | 627 | 9/32 | 1 5/8 | 1 3/16 | 15036 | 15076 | 15096 |



| CAT. NO. | L | W |
|----------|---------|------|
| 1565 | 2 5/8 | 3/8 |
| 1566 | 2 13/16 | 9/16 |

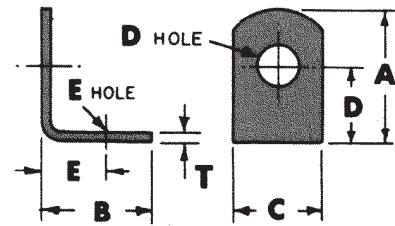
UNIVERSAL BRACKETS

A wide variety of brackets for various mounting applications.



633 613 615 618 619 620
4335 4336 4336 4326

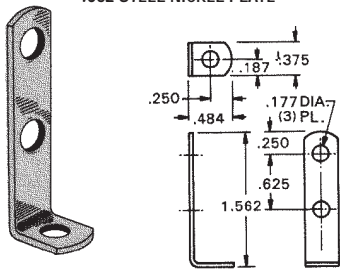
STANDARD BRACKETS (Brass and Steel)



Selection of Brackets with Clear Holes

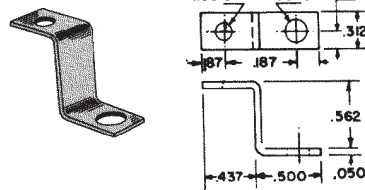
| CAT. NO. | A | B | C | D | "D" Hole Dia. | E | "E" Hole Dia. | "T" Material | Finish |
|----------|-------|------|------|------|---------------|------|---------------|--------------|--------|
| 633 | .375 | .375 | .281 | .218 | .140 | .218 | .140 | .032 Brass | Nickel |
| 613 | .390 | .453 | .375 | .234 | .147 | .299 | .128 | .032 Brass | Nickel |
| 615 | .420 | .343 | .281 | .281 | .144 | .203 | .128 | .032 Brass | Tin |
| 4335 | .562 | .562 | .500 | .412 | .120 | .411 | .120 | .062 Steel | Nickel |
| 4336 | .562 | .562 | .500 | .412 | .144 | .412 | .144 | .062 Steel | Nickel |
| 618 | .628 | .628 | .375 | .378 | .169 | .378 | .169 | .050 Brass | Tin |
| 619 | .687 | .687 | .375 | .500 | .144 | .500 | .144 | .032 Steel | Tin |
| 4326 | 1.013 | .487 | .312 | .816 | .140 | .332 | .140 | .050 Steel | Nickel |
| 620 | 1.156 | .656 | .375 | .906 | .169 | .420 | .169 | .032 Steel | Tin |

.062 STEEL NICKEL PLATE



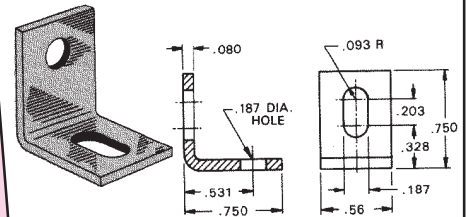
CAT. NO. 1564

.050 STEEL NICKEL PLATE



CAT. NO. 4325

.080 ALUMINUM

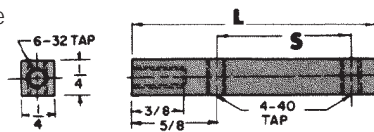


CAT. NO. 4337

BOARD SUPPORT BRACKETS

MATERIAL: Brass, Zinc Plate

A sturdy support for mounting of standardized terminal boards.



| CAT. NO. | Overall Length "L" | Spacing "S" |
|----------|--------------------|-------------|
| 1647 | 2 3/8 | 1 1/2 |
| 1648 | 2 7/8 | 2 |
| 1649 | 3 3/8 | 2 1/2 |

CUSTOM STAMPING AND ASSEMBLY

Keystone is fully integrated to meet your total design & production needs.

Manufacturing custom designs & modifications of standard items is our specialty.

Quotations on special stamping & assembly furnished promptly upon receipt of sample, sketch, print or CAD drawings.