

Excellent Integrated System Limited

Stocking Distributor

Click to view price, real time Inventory, Delivery & Lifecycle Information:

[NMB Technologies Corp.](#)
[PG15S-D20-HHB9](#)

For any questions, you can email us directly:

sales@integrated-circuit.com

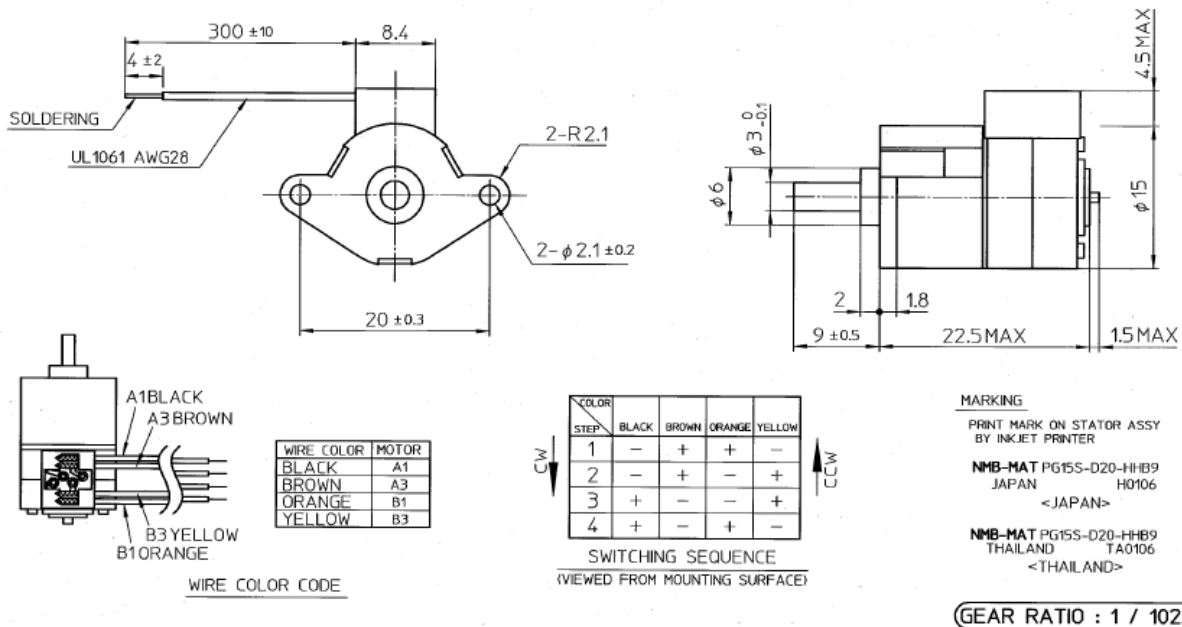


Standard PG Step Motors

PG15S-D20-HHB9

Model Specifications

Model:	PG15S-D20-HHB9
Step Angle:	0.176 °
Drive Voltage:	DC 15.0 V
Shaft Length:	9mm
Wire Length:	300mm fly leads (no connector)
Wire Holder:	90 deg. Left
Gear Ratio:	1/102.5
Electrical:	15V, 100mA
	Bipolar Constant Current



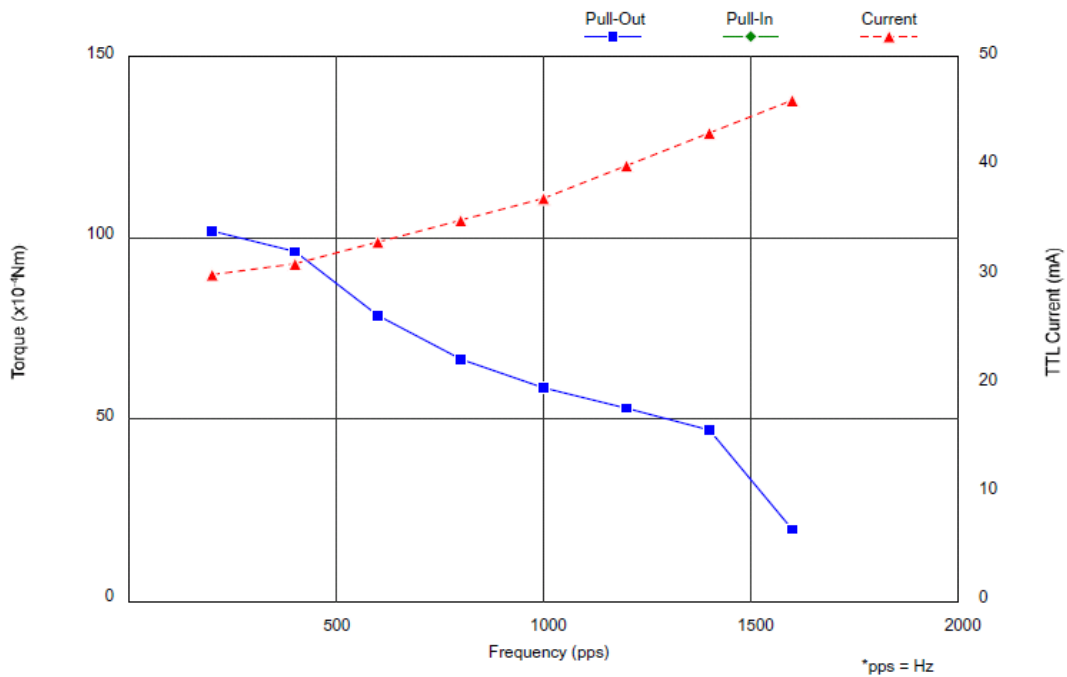


PG15S-D20-HHB9

DYNAMIC TORQUE CHARACTERISTICS (No. 63559)

(ALL VALUES ARE GAINED BY MEASUREMENT AND NOT SPECIFICATIONS VALUES)

Model : PG15S-D20-HHB9
 Drive Mode : BIPOLAR CHOPPER
 Drive Voltage : 15.0 V
 Method : 2-2P
 Drive IC : UDN2916B-V
 Surge/Current : / 100 mA / Phase (Peak)
 Coil Resistance : 10.0 Ω
 Magnet Material : MS70A
 Stator Material : SECC
 Note : Current adjust by 0 pps.,GEAR RATIO 1/102.5
 MAES8U4 STA9Z03



Frequency (pps)	200	400	600	800	1000	1200	1400	1600
■ Pull-Out (x10 ⁻⁴ Nm)	102.0	96.1	78.5	66.7	58.8	53.0	47.1	19.6
◆ Pull-In (x10 ⁻⁴ Nm)								
▲ Current (mA)	30	31	33	35	37	40	43	46